

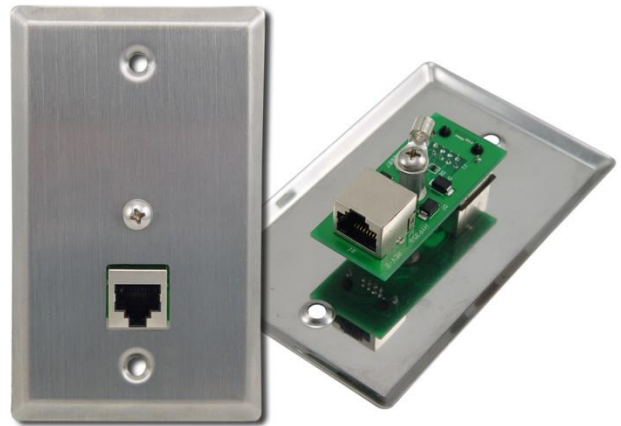
HyperLink Wireless Brand Indoor In-Wall Electrical Box Mount 10/100/1000 Base-T Lightning Surge Protector - Model: WPCAT6

Applications

- 10/100/1000 Base-T CAT5 protection
- Protection for servers, routers, access points and other gigabit networking equipment
- Wired PoE switches
- VoIP telephone

Features

- CAT5, CAT5e and CAT6 compatibility
- (2) shielded RJ-45 jacks
- Brushed stainless steel wall plate
- 802.3af mode A and B PoE compatible
- Supports use of shielded CAT6 cable



Description

The WPCAT6 provides superior lightning and surge protection with improved frequency response for indoor 10/100/1000 Ethernet networks. The use of ultra-low capacitance semiconductor protection arrays provides superior high frequency response and improved return loss for the four data pairs. The unit has low line to line and line to ground capacitance to minimize distortion of high-speed signals. The design provides protection for both common and differential mode surges.

The WPCAT6 is compatible with 802.3af Power-over-Ethernet (PoE) devices. It supports both PoE mode A and B for power and is compatible with both normal and inverted polarity voltage PoE equipment. The WPCAT6 can be used with equipment with or without Power-over-Ethernet (PoE) functionality.

Electrical Box Mount

The WPCAT6 features a brushed stainless steel wall plate designed to mount to standard in-wall electrical/conduit boxes. This protector is ideal for use in homes and offices with existing in-wall Ethernet wiring. A ground lug is provided directly on the protector and mounting screws are included.

EMI Noise Suppression

The WPCAT6 features shielded RJ-45 jacks. This along with the stainless steel wall plate helps reduce the effects of EMI interference.

Specifications

Mechanical Specifications

Connectors	(2) Shielded RJ-45
Wall Plate Material	Brushed Stainless Steel
Ground Lug	18 AWG Max.
Weight	0.16 lbs. (0.07 kg)
Dimensions (W x H x D)	2.7 x 4.5 x 1.0 in (69.8 x 114.3 x 25.4 mm)
Operating Temperature	-40°C to +80°C (-40°F to +176°F)
RoHS Compliant	Yes

Electrical Specifications

Clamping Voltage	65 Volts
Data Line Impedance	100 Ohms Balanced
CAT6 Data Lines	Pair 1: Pins 1 and 2 Pair 1: Pins 3 and 6 Pair 1: Pins 4 and 5 Pair 1: Pins 7 and 8

