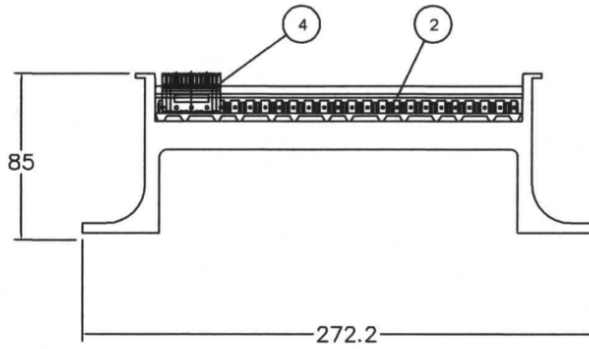
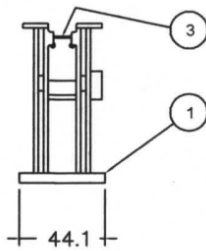
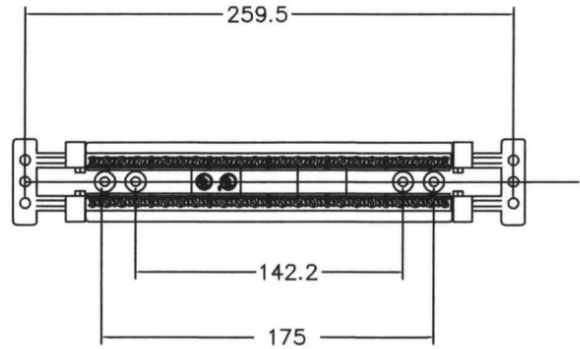


ZONE	REF	DESCRIPTION	DATE	APPV.
-	A	INITIAL RELEASE	11/17/14	E.A.

NOTES:

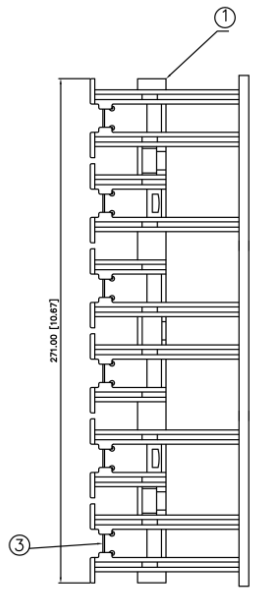
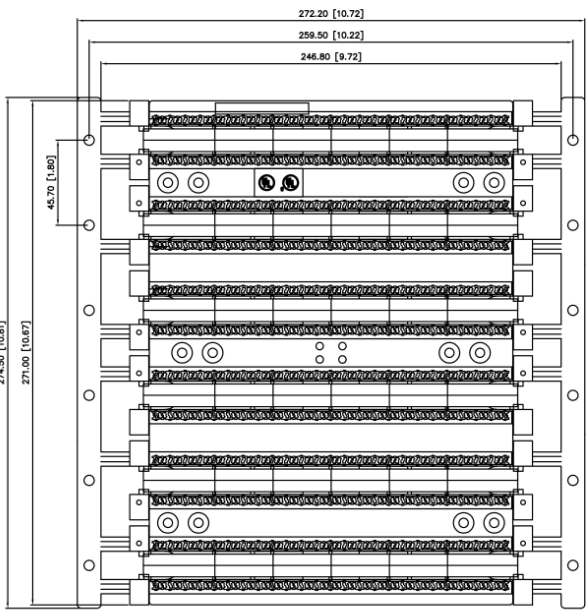
1. MATERIAL: P.C.
2. PART TO BE FREE OF BURRS, SUCKS & SCRATCHES.
3. DRAFT ANGLE: 1°MAX.
4. ALL UNSPECIFIED CORNER, EDGE, OR FILLET BREAKS ARE TO BE 0.50mm MAXIMUM.

ITEM	DESCRIPTION	QTY	P/N
1	48 PR BASE WITH LEG	1	LP1340
2	24 PR INSERT	2	LP1019
3	INDEX HOLDER	1	110PH
4	110-CAT6 CONNECTING CLIP 610C-4 Connecting Clip not included	12	610C-4

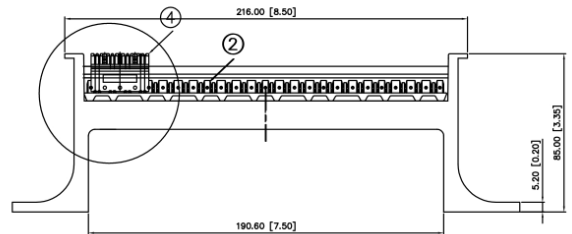


TOLS: -		DRAWN:		CHECKED:	
NEXT ASSY: -		DRAWN:		CHECKED:	
TITLE: 48 Pair Cat6 Wiring Block w/Legs				DWG. NO. 610AWB-48	
				REV. A	

ZONE	REF	DESCRIPTION	DATE	APPV.
-	A	INITIAL RELEASE	07/16/07	E.A.



ITEM	DESCRIPTION	QTY	P/N
1	300 PR BASE WITH LEG	1	LP1341
2	24 PR INSERT	12	LP1664
3	INDEX HOLDER	6	110PH
4	110-CAT6 CONNECTING CLIP	72	610C-4



NOTES:
 1. MATERIAL: P.C.
 2. PART TO BE FREE OF BURRS, SUCKS & SCRATCHES.
 3. DRAFT ANGLE: 1°MAX.
 4. ALL UNSPECIFIED CORNER, EDGE, OR FILLET BREAKS ARE TO BE 0.50mm MAXIMUM.

TOLS: -			
NEXT ASSY: -		DRAWN:	
TITLE: 288 Pair Cat6 Wiring Block w/Legs		CHECKED: DWG. NO. 610AWB-288	
		REV. A	

1 2 3 4