



This Category 6A Unshielded (UTP) Outdoor Cable has four pairs of 23AWG Solid Bare Copper Conductors with a Black UV rated PVC Jacket. This cable is supplied on a 1000FT wooden spool and is ETL Listed. Our bulk cable is marked in descending order so you always know how much cable is left.

Applications

- 10/100/1000Base-T
- 100Base-VG
- 155 Mbps and 622-Mbps ATM
- Other High-Performance Applications
 - Aerial Applications
 - Outdoor Applications
 - Antennas

Compliance

- ISO/IEC 11801
- TIA/EIA-568-C.2
- ETL Listed
- RoHS Compliance For The Requirement Of European Union Issued Directive 2002/95/EC

Physical Characteristics

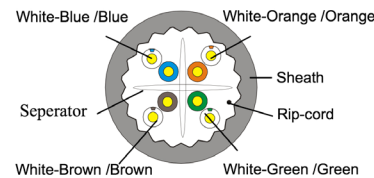
- Conductor Size: 23AWG
- Conductor Material: Solid Bare Copper
- Insulation Material: High Density Polyethylene (HDPE)
- Number of Conductors: 8 Conductors
- Number of Pairs: 4 Pairs
- Outer Shield Material: N/A
- Drain Wire: N/A
- Outer Jacket Material: UV PVC (Complies RoHS)
- Outer Jacket Diameter: 7.1mm ± 0.4mm
- Outer Jacket Rip Cord: Yes

CAT6A 750MHz Outdoor Solid Unshielded Bulk Cable

CAT6A



Technical Diagram



Available Jacket Colors

- Black Item# C6AX-1503

Cable Features

- Tested up to 750MHz
- Meets or Exceeds CAT6A TIA568C.2 Standards
- Extra Headroom Provides Room For Growth
- Low Attenuation and Power-Sum Crosstalk

Construction Facts

- This Outdoor Cable Has High Density Polyethylene Insulation
- Longitudinal Rip Cord For Easy Jacket Opening

Cable Put-Ups

Cable is supplied in 1000ft increments on a wooden spool.

CAT6A 750MHz Outdoor Solid Bulk Cable Electrical Specifications

Frequency MHz (Maximum)	ATT ≤ dB/100 m (328 ft.) (Maximum)	ACR dB/100 m (328 ft.) (Maximum)	DELAY ≤ ns/100 m (328 ft.) (Minimum)	NEXT ≥ dB/100 m (328 ft.) (Minimum)	PS-NEXT ≥ dB/100 m (328 ft.) (Minimum)	ELFEXT ≥ dB/100 m (328 ft.) (Minimum)	PS-ELFEXT ≥ dB/100 m (328 ft.) (Minimum)	Return Loss ≥ dB (Minimum)
1	2.1	---	570.0	74.3	72.3	68.0	65.0	20.0
4	3.8	---	552.0	65.3	63.3	56.0	53.0	23.0
8	5.3	---	546.7	60.8	58.8	49.9	46.9	24.5
10	5.9	---	545.4	59.3	57.3	48.0	45.0	25.0
16	7.5	---	543.0	56.2	54.2	43.9	40.9	25.0
20	8.4	---	542.1	54.8	52.8	42.0	39.0	25.0
25	9.4	---	541.2	53.3	51.3	40.0	37.0	24.3
31.25	10.5	---	540.4	51.9	49.9	38.1	35.1	23.6
62.5	15.0	---	538.6	47.4	45.4	32.1	29.1	21.5
100	19.1	---	537.6	44.3	42.3	28.0	25.0	20.1
200	27.6	---	536.5	39.8	37.8	22.0	19.0	18.0
250	31.1	---	536.3	38.3	36.3	20.0	17.0	17.3
300	34.3	---	536.1	37.1	35.1	18.5	15.5	16.8
500	45.3	---	535.6	33.8	31.8	14.0	11.0	15.2
750	62.3	---	535.3	31.1	29.1	10.5	7.5	14.0

PrimusCable.com - (951) 824-1571





CAT6A 750MHz Outdoor Solid Unshielded Bulk Cable

Pair Color Code Chart

- Pair 1 ----- White/Blue Stripe & Blue
- Pair 2 ----- White/Orange Stripe & Orange
- Pair 3 ----- White/Green Stripe & Green
- Pair 4 ----- White/Brown Stripe & Brown

Mechanical Characteristics

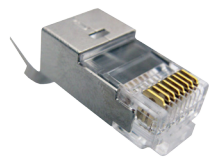
- Storage Temperature Range: -30~+60
- Installation Temperature Range: -30~+60
- Operating Temperature Range: -30~+60
- Bulk Cable Length: 1000FT
- Max. Recommended Pulling Tension: 70N
- Min. Bend Radius/Minor Axis: 6D
- Min. Bend/Installation: 6D
- Test Object: Jacket
- Test Material: PVC
- Before Tensile Strength: ≥ 13.5
 - Aging Elongation: ≥ 150
 - Aging Condition: 100°C x 24hrs x 7Days
- After Tensile Strength: ≥ 12.5
 - Aging Elongation: ≥ 125
 - Cold Bend: No Visible Cracks (-20°C \pm 2°C x 4h)

Optional Networking Accessories

Shielded RJ45 Modular Plugs

Our CAT6A shielded RJ45's are gold plated & work with solid or stranded cable.

- CN1-021-8C6SH



CAT6A RJ45 Ratchet Crimping Tool

The right tool makes all the difference, and you can cut, strip and crimp with this one tool.

- TL1-4591



Electrical Characteristics

- Nominal Mutual Capacitance: 5.5nF/100m
- Nominal Velocity of Propagation: 68%
- Maximum Delay: 536.1 @ 300MHz (ns/100m)
- Maximum Delay Skew: ≤ 45 (ns/100m)
- Maximum Conductor DC Resistance: 9.38 (@ 20°C OHm/100m)
- Maximum Operating Voltage - UL: 300V
- Maximum DCR Unbalanced: 5% (@ 20°C)
- Attenuation (Maximum)
 - 34.3 dB/100m (328.1ft.) @ 300MHz
 - 62.3 dB/100m (328.1ft.) @ 750MHz
- 1.0 - 250MHz Impedance: 100 Ω \pm 15
- 251 - 500MHz Impedance: 100 Ω \pm 22
- NEXT (Minimum)
 - 37.1 dB/100m (328.1ft.) @ 300MHz
 - 31.1 dB/100m (328.1ft.) @ 600MHz
- PS-NEXT (Minimum)
 - 35.1 dB/100m (328.1ft.) @ 300MHz
 - 29.1 dB/100m (328.1ft.) @ 600MHz
- Return Loss (Minimum)
 - 16.8 dB/100m (328.1ft.) @ 300MHz
 - 14 dB/100m (328.1ft.) @ 600MHz

Jacket Printing

PRIMUS CABLE CMX UTP 4PR 23AWG CAT6A 10G UV OUTDOOR ETL VERIFIED TO ANSI/TIA 568-C.2 ZONE A B C D E F / DEVICE 1 2 3 4 5 6 7 8 9 (VID:018) #####FT

Sequential foot markers on jacket.

©2016 CRN Solutions Inc. dba. Primus Cable
All Rights Reserved.

Although Primus Cable makes every reasonable effort to ensure their accuracy at the time of this publication, information and specifications described herein are subject to error or omission and to change without notice, and the listing of such information and specifications does not ensure product availability.

Primus Cable provides the information and specifications herein on an "AS IS" basis, with no representations or warranties, whether express, statutory or implied. In no event will Primus Cable be liable for any damages (including consequential, indirect, incidental, special, punitive, or exemplary damages) whatsoever, even if Primus Cable has been advised of the possibility of such damages, whether in an action under contract, negligence or any other theory, arising out of or in connection with the use, or inability to use, the information or specifications described herein.

All sales of Primus Cable products are subject to Primus Cable's standard terms and conditions of sale.

Primus Cable believes this product to be in compliance with EU RoHS (Directive 2002/EC, 27 Jan 2003). Material manufactured prior to the compliance date may be in stock at Primus Cable facilities and in our Distributor's inventory. The information provided in this Product Disclosure, and the identification of materials listed as reportable or restricted within the Product Disclosure, is correct to the best of Primus Cable's knowledge, information, and belief at the date any other operation of the product itself or the one that it becomes a part of. This Product Disclosure is not to be considered a warranty or quality specification and regulations based on their individual usage of the product.

Primus Cable declares this product to be in compliance with EU LVD (Low Voltage Directive 73/23/EEC), as amended by directive 93/68/EEC

PrimusCable.com - (951) 824-1571

